

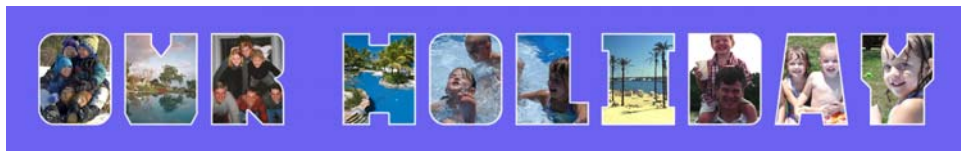
HOW TO USE SPT32 FONT MODE

INTRODUCTION

This is a “step by step” guide to help you understand the steps required to create popular name mats using SPT32 Font Mode.

What is a Name Mat? - Name mats are a popular concept, where customers can choose letters and words as apertures for photographs to be displayed.

Here are some examples:



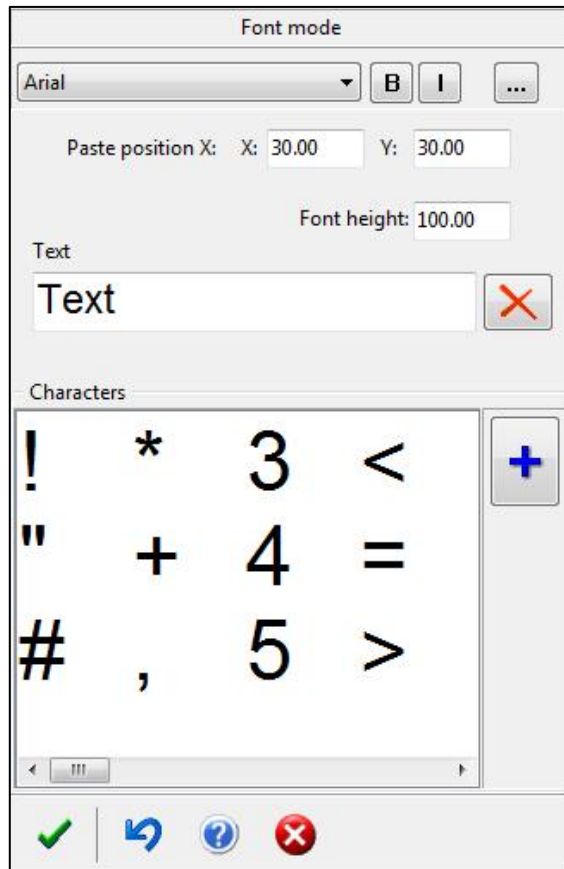
Where can I get that font? - Gunnar have created a special “True Type” font for this called “[Gunnar Photofont](#)”, which works well for this concept. Contact your Gunnar distributor for a version of this font to use, if you don’t already have it.


How can I add more fonts? - All fonts are stored in your <c:/windows/fonts> directory on your PC. If you download a new font, you need to copy it into this directory on your PC to be able to use it.

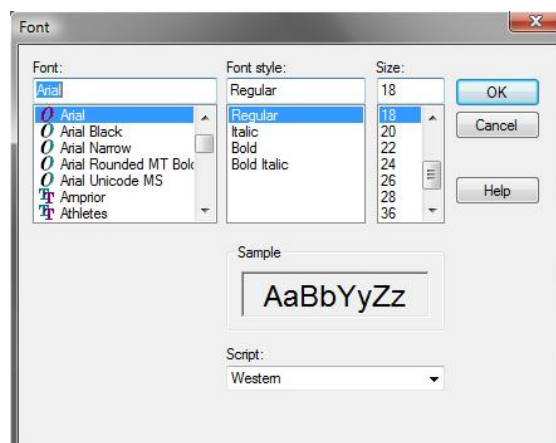
What are the steps required to create these mats? – The steps are detailed below:

Part 1 – Typing the Letters

1. Make sure you are in “cut from the back” mode. (**F4**)
2. Click on **OPTIONS** in the menu bar, and select “Font Mode” (or **CTRL F**). This should bring up your fonts dialogue on the left hand side of the screen.



3. Select your font style using the font drop down directory (the default font is usually “Arial”), or if you wish to import a new font, click on the  button, and this will bring up a “Font Directory” to view and select a new font, sourced from your <c:/windows/fonts> directory.



4. **Font Directory:** On the left hand side of your “Font Directory” dialogue box there will be a window saying “Font” with the default “Arial” type font directly below it. Using the slide bar that is between the up and down arrows, locate and select a new font and you will see that the default “Arial” font is now replaced with the new font. Click OK.
5. “Paste Position X: & Paste Position Y” - This is where you can enter your left & top margin measurements.





6. Enter your height in the “Font Height” field.




7. Locate the box marked “Text” found below the “Font Height” box.



Type in your word or name, and click on the  box at the bottom of the screen. Your word or name is now projected over to the right hand side of the screen.

8. You can now exit Font Mode by clicking the  in the bottom right hand corner of the Font Dialogue Window.

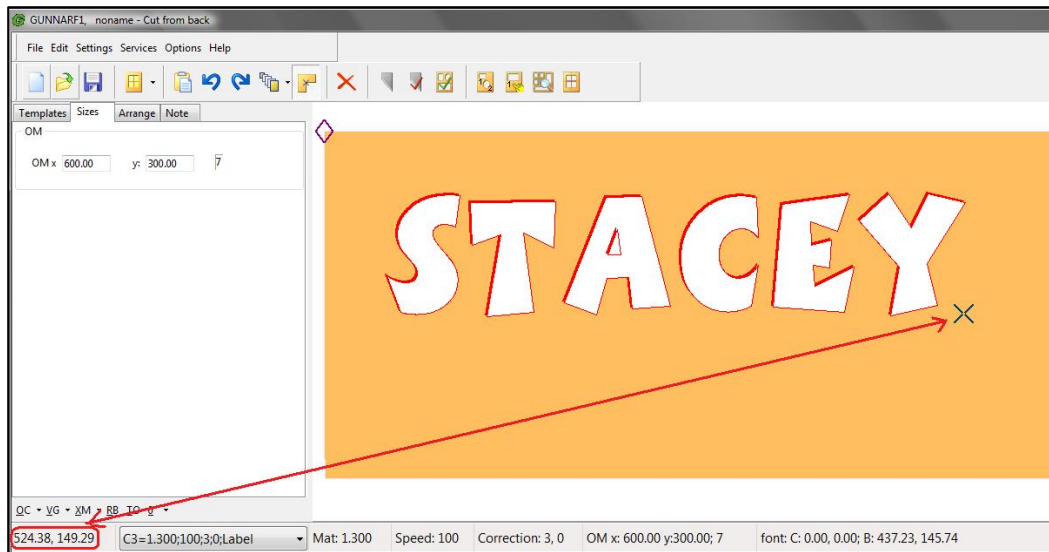
Part 2 – Calculating the Outside Mat Dimensions

1. To calculate the outside dimensions of matboard required, it may be easier to use “Catch Mode”. Activate “Catch Mode” by clicking the  button on the toolbar, or by simply pressing the shortcut key “C”.
2. Now that you are in “Catch Mode”, move your mouse over the word and you will notice that there is a small, magnetic “blue X” that will move around various points of the words & shapes.

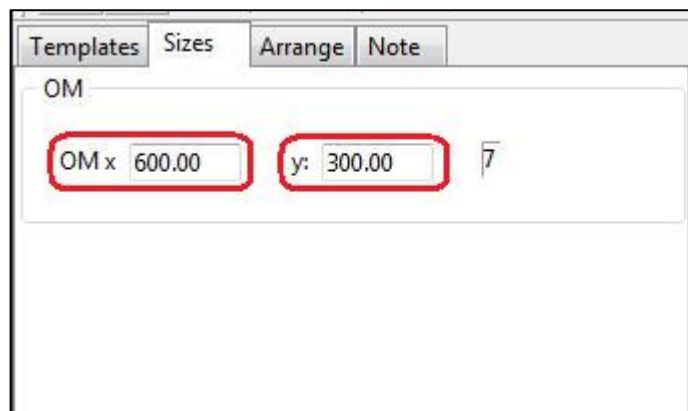
IMPORTANT: DO NOT CLICK THE MOUSE IN CATCH MODE. If you accidentally click the mouse in catch mode, turn the catch mode off and on again.

You can use this “blue X” to help calculate the outside dimensions of matboard required for the job. Position the magnetic “blue X” close to the bottom right hand corner of the last letter making sure that the “Catch Mode” cursor (not your mouse cursor) is on the corner of the letter. In the

very bottom left hand corner of the screen, you will notice the co-ordinates for this position. Mentally add the size of your right & bottom margins to these x & y co-ordinates.



3. Turn off Catch Mode.
4. Click over to the "sizes" tab on the left hand side of the screen above the templates, and now enter in your two new co-ordinates in the "OM:x" & "OM:y" fields.



5. Lasso the whole word with the mouse (or "CTRL A" to "select all") and apply an "OC" outside cut.
6. Insert mat face down in the CMC, and cut (CTRL F9)

FONT MODE HINTS & TIPS

- Most fonts cut better from the back of the mat, rather than the front of the mat.
- Cutting fonts wears blades much quicker than cutting standard rectangles, so expect to change the blades more frequently.
- Always test cut new fonts in off-cuts before cutting new sheets. When testing fonts, try cutting the letter “S” as a test, as this is usually the hardest letter to cut in a font style.
- In most cases, it is recommended that the size of the font to be cut out be no smaller than 60mm. The smaller the font size (depending on style) the greater the chance of breaking the blade. This can be changed in the “Font Height” box if needed by double clicking in the box and typing in your measurement.