

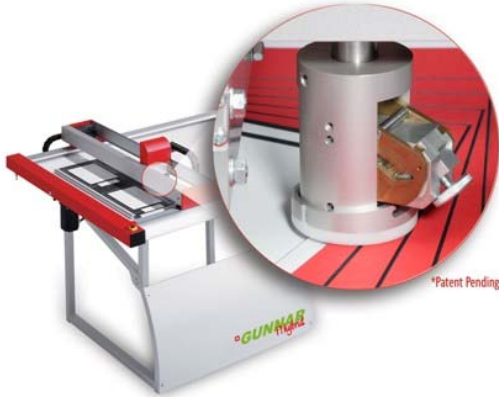


GUNNAR

F1 hybrid

do more.

The **AWARD-WINNING** GUNNAR F1 HYBRID is the result of GUNNAR's long experience and track record as pioneers of the framing industry. Automatically change between 45° and 90° cuts, in a single un-interrupted process. Never before has a CMC been this effortless to operate. Automatic variable blade depth, automatic v-grooves, front or back, all in a single, seamless process. Welcome to the future of matcutting....



Introducing the world's first "Hybrid" CMC...

Finally! - It's all automatic!

- ✓ No changing heads!
- ✓ No changing cartridges!
- ✓ No changing dials!
- ✓ No tools required!
- ✓ No mistakes!
- ✓ **NO PROBLEMS!**

GUNNAR - The world's most Award-Winning brand of CMC:

- WINNER** - Gold SMAC Show Innovation Award 2009
- WINNER** - PPFA Recognition for Innovation Award 2009
- WINNER** - Fine Art Trade Guild Innovation Award 2007

unique features & benefits

- ✓ **hybrid technology** - award-winning technology allows you to automatically change between 45° and 90° cuts, in a single, seamless, un-interrupted process!
- ✓ **automatic variable blade depth** - automatically cut v-grooves and openings in in any matboard thickness (up to 3.0mm), in one un-interrupted step. No need for any adjustment or blade change when cutting. Cut double mats and outside straight cuts in one step!
- ✓ **swiss precision** - award winning swiss design leads the market in superior engineering, and reliability & accuracy "second to none" in the industry.
- ✓ **guaranteed quality** - guaranteed perfect circles and ovals (no entry/exit marks) and guaranteed no hooking, regardless of the thickness or brand of matboard you choose.
- ✓ **fast** - with a cutting speed of 500mm/second, you can cut 16" x 20" opening in less than 8 seconds.
- ✓ **tool-free blade change** - easily change the blade in a matter of seconds.
- ✓ **adjustable table angle** - including horizontal operation, to eliminate all "gravity related" problems with off-cuts slipping down and interrupting subsequent cuts.
- ✓ **designed by framers for framing** - intuitive design and operation, which is easy to understand by anyone with a picture framing background.
- ✓ **two table sizes available** - the Gunnar F1 Hybrid is available in two different sized models: oversized 40" x 60" and compact 36" x 48" .
- ✓ **#1 best selling brand of CMC in Australia** - since 1994, Gunnar continues to be the most popular brand of CMC used by more Australian framers than any other brand.



GUNNAR
...for framers who prefer quality and precision.

Ph: 1800 677 854
www.megawood.com.au

MW
MEGAWOOD

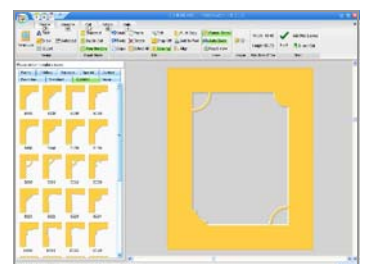
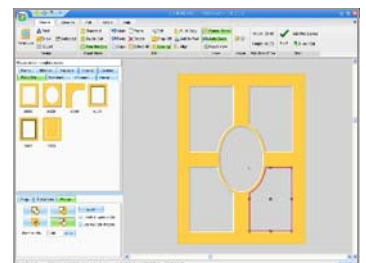
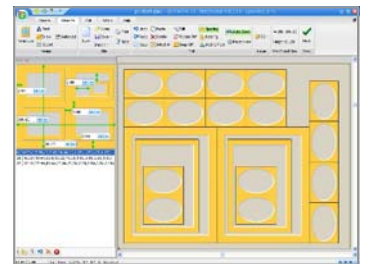
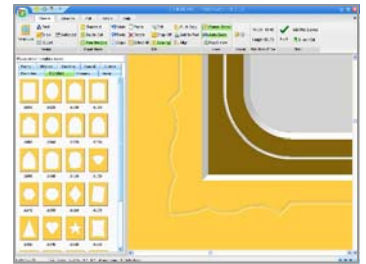
➔ professional service & support ➔

Megawood offers the most experienced, qualified Gunnar technicians in the industry. Our technicians have been "factory trained" across our full range of machinery (including Gunnar in Switzerland), we have built our reputation for support from our collective years of experience. Megawood is familiar with the needs & demands of your equipment, and all service work is supported by our service guarantee.

➔ GMC software features & benefits ➔

- ✓ **easy to learn** – Gunnar GMC (Gunnar Mat Creator) software has been intuitively & logically designed by framers to "think like a framer", so you can learn with ease, featuring the industry's largest dynamic 3D view screen, with infinite dynamic mouse wheel zoom for easy visualisation.
- ✓ **customised interface** – personalise your GMC software interface to suit you! streamline your operation by categorising your mat templates into favourites, mix & match corner templates for different shapes, create your own instant-click clip-art, and even choose your own interface themes and skins!
- ✓ **direct draw mode** – quickly and accurately modify or create ANY desired shape directly on the screen just with the mouse! Paste a photo in the background and quickly trace around it using a complete range of drawing tools, without the need to import from other external software packages! The possibilities are endless.... and now within reach!
- ✓ **automatic alignment tools** – no more mud maps and calculators! GMC features the industry's most comprehensive range of alignment tools to make even the most elaborate multi-opening mat designs a breeze, including automatic snap alignment with click and drag; dynamic outside sizing; dynamic scaling; dynamic rotation and more!
- ✓ **v-grooves, reverse bevels, debossing** – can all be cut with perfect precision at the click of a mouse, with limitless layering of these on any mat layer.
- ✓ **powerful merge functions** – over-lap and combine different shapes to make new ones, as well as intersecting shapes, and automatic contour path creation between shapes as well.
- ✓ **automatic layout systems** – production jobs become simple and profitable, as the GMC software can instantly arrange and layout multiple production mats, and nested mat layouts at the click of a button; saving hours of time and maximising board yield!
- ✓ **free future software upgrades** – GMC updates are available for direct download from the Gunnar customer website, 24 hours a day.

+ GUNNAR
mat creator



➔ affordable ➔

- ✓ **leasing finance** – simple & flexible finance packages are available, with affordable monthly repayments. This means that your new Gunnar matcutter will not only start paying for itself from day one, but actually generate a new profitable income as well.



e-mail: sales@megawood.com.au

phone: **1800 677 854**

www.megawood.com.au