

# do more. <sup>+</sup> GUNNAR 601-RS

the "next generation" in computerised matcutting has arrived...

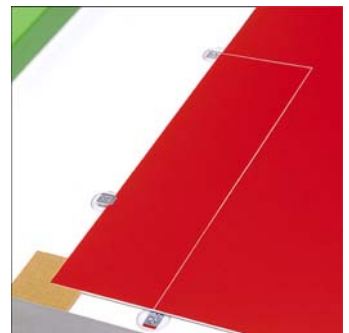
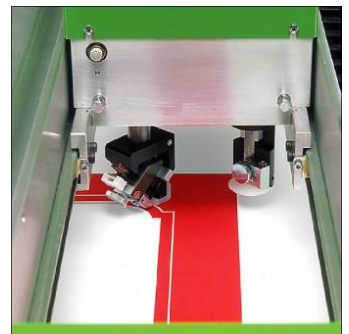


**GUNNAR** - The world's most Award-Winning brand of CMC:

- WINNER** - Gold SMAC Show Innovation Award 2009
- WINNER** - PPFA Recognition for Innovation Award 2009
- WINNER** - Fine Art Trade Guild Innovation Award 2007

## unique features & benefits

- ✓ **swiss precision** – the Gunnar 601-RS Swiss design leads the market in superior engineering, and reliability & accuracy "second to none" in the industry.
- ✓ **twin cutting head** – with the extra "straight" cutting head, multiple production mats can be cut "edge to edge", saving time, wastage and with a professional square edge.
- ✓ **cuts to the edge** – the Gunnar 601-RS unique button clamping system allows you to cut to the very edge of the matboard, with no wastage.
- ✓ **faster** – twice the speed of the Gunnar F1, and faster than any other brand of computerized matcutter in its field.
- ✓ **automatic blade depth** – with the ability to cut v-grooves and openings in one step, there is no need for any adjustment or blade change when cutting these combined features. this system also allows you to cut mass-produced double mats and outside straight cuts in one step.
- ✓ **split clamping zones** – double your production with "left-right" split clamping operation, with two separate cutting zones utilized by a single operator.
- ✓ **adjustable table angle** – including horizontal operation, to eliminate all "gravity related" problems with off-cuts slipping down.
- ✓ **designed by framers for framing** – intuitive design and operation, which is easy to understand by anyone with a picture framing background.
- ✓ **40" x 60" table size** – you can confidently cut mats in oversized matboard.
- ✓ **#1 best selling brand of CMC in Australia** - since 1994, Gunnar continues to be the most popular brand of CMC used by more Australian framers than any other brand.



<sup>+</sup> **GUNNAR**  
...for framers who prefer quality and precision.

Ph: 1800 677 854  
[www.megawood.com.au](http://www.megawood.com.au)

**MEGAWOOD**

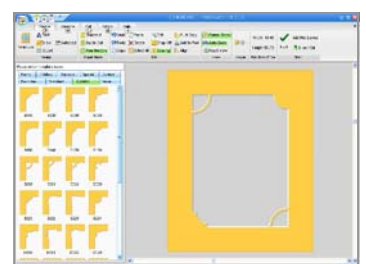
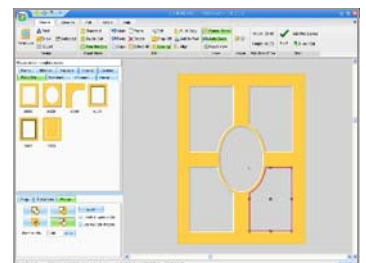
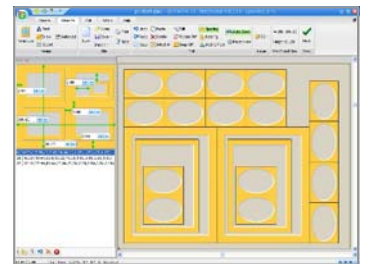
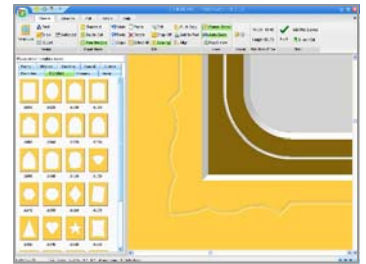
## professional service & support

Megawood offers the most experienced, qualified Gunnar technicians in the industry. Our technicians have been "factory trained" across our full range of machinery (including Gunnar in Switzerland), we have built our reputation for support from our collective years of experience. Megawood is familiar with the needs & demands of your equipment, and all service work is supported by our service guarantee.

## GMC software features & benefits

- ✓ **easy to learn** – Gunnar GMC (Gunnar Mat Creator) software has been intuitively & logically designed by framers to "think like a framer", so you can learn with ease, featuring the industry's largest dynamic 3D view screen, with infinite dynamic mouse wheel zoom for easy visualisation.
- ✓ **customised interface** – personalise your GMC software interface to suit you! streamline your operation by categorising your mat templates into favourites, mix & match corner templates for different shapes, create your own instant-click clip-art, and even choose your own interface themes and skins!
- ✓ **direct draw mode** – quickly and accurately modify or create ANY desired shape directly on the screen just with the mouse! Paste a photo in the background and quickly trace around it using a complete range of drawing tools, without the need to import from other external software packages! The possibilities are endless.... and now within reach!
- ✓ **automatic alignment tools** – no more mud maps and calculators! GMC features the industry's most comprehensive range of alignment tools to make even the most elaborate multi-opening mat designs a breeze, including automatic snap alignment with click and drag; dynamic outside sizing; dynamic scaling; dynamic rotation and more!
- ✓ **v-grooves, reverse bevels, debossing** – can all be cut with perfect precision at the click of a mouse, with limitless layering of these on any mat layer.
- ✓ **powerful merge functions** – over-lap and combine different shapes to make new ones, as well as intersecting shapes, and automatic contour path creation between shapes as well.
- ✓ **automatic layout systems** – production jobs become simple and profitable, as the GMC software can instantly arrange and layout multiple production mats, and nested mat layouts at the click of a button; saving hours of time and maximising board yield!
- ✓ **free future software upgrades** – GMC updates are available for direct download from the Gunnar customer website, 24 hours a day.

 GUNNAR  
mat creator



## affordable

- ✓ **leasing finance** – simple & flexible finance packages are available, with affordable monthly repayments. This means that your new Gunnar matcutter will not only start paying for itself from day one, but actually generate a new profitable income as well.



e-mail: [sales@megawood.com.au](mailto:sales@megawood.com.au)

phone: **1800 677 854**

**[www.megawood.com.au](http://www.megawood.com.au)**