



GUNNAR

4001

do more.

...from 0 to 2000 millimetres in less than a second.

The ground breaking GUNNAR 4001 is simply the most advanced CMC available on the planet. Not only is it the fastest system available for producing mats, it is the tested & proven champion when it comes to reliability and efficiency in high-end production framing businesses around the globe.



GUNNAR - The world's most Award-Winning brand of CMC:

WINNER - Gold SMAC Show Innovation Award 2009

WINNER - PPFA Recognition for Innovation Award 2009

WINNER - Fine Art Trade Guild Innovation Award 2007

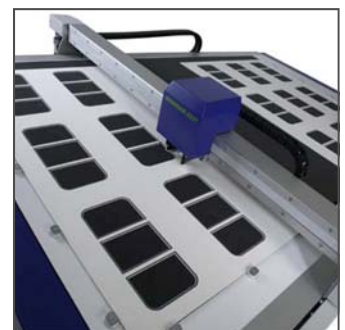
➤ **recognised reputation** ➤

Many of the world's leading frame manufacturers chose to use "only the best", with no compromise on quality or productivity. The industry leading, award-winning Gunnar production level CMC owners include the following -

- ✓ **UR1** - Australia's largest photo-frame manufacturer.
- ✓ **Nielsen & Bainbridge** - The world's leading matboard manufacturer.
- ✓ **Michael's** - The largest chain of custom framing stores in the world.
- ✓ **Savage Universal** - The biggest manufacturer of pre-cut photo mats in the US market.
- ✓ **Artist's Framing Service** - Owned by Jay Goltz, this award winning business in the United States is recognised as one of the largest & most successful "custom framing" stores in the world.

➤ **designed for efficiency** ➤

The Gunnar 4001 has been designed with three important elements in mind, safety, speed & space. Apart from it's unbelievable cutting speed, the Gunnar 4001 is a "left-right" side loading operation, which is both logical and easier for the operator to load and unload mats, saving time. This also allows the machine to be placed up against a wall in a workshop if required, saving space. Given that there are no sides or edges on the Gunnar 4001, this means there is open, unobstructed access to the work area, and increased safety for the operator.



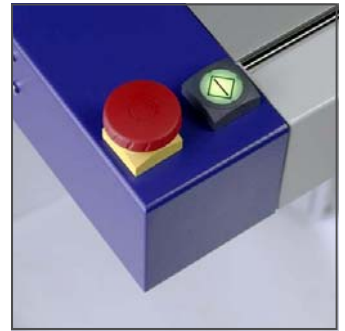
 **GUNNAR**
...for framers who prefer quality and precision.

Ph: 1800 677 854
www.megawood.com.au

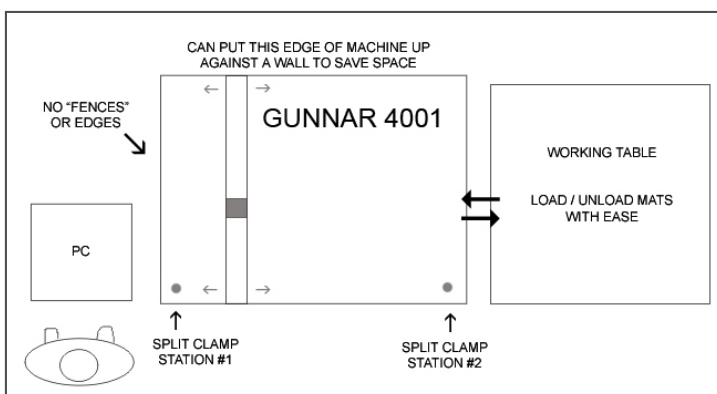


unique features & benefits

- ✓ **swiss precision** – the Gunnar 4001's Swiss design leads the market in superior engineering, and reliability & accuracy "second to none" in the industry.
- ✓ **twin cutting head** – with the extra "straight" cutting head, multiple production mats can be cut "edge to edge", saving time, wastage and with a professional square edge.
- ✓ **twin clamping systems** – with the pneumatic button clamps combined with the vacuum bed system, mats can be secured confidently.
- ✓ **cuts to the edge** – the Gunnar 4001's unique vacuum clamping system allows you to cut to the extreme edge of the matboard, with no wastage.
- ✓ **faster** – with movement speeds of up to 2000mm/second, combined with it's advanced split table clamping system, the Gunnar 4001 is capable of producing mats faster than any other system in the world.
- ✓ **automatic blade depth** – with the ability to cut v-grooves and openings in one step, there is no need for any adjustment or blade change when cutting these combined features. this system also allows you to cut mass-produced double mats and outside straight cuts in one step.
- ✓ **quick, tool-free blade change** – easy to use, with minimal downtime between blade changes. compared to our competitors, the Gunnar 4001, does not require the operator to manually adjust the blade depth every time you change a blade. this also means you do not have to cut "test mats" to check the depth.
- ✓ **low maintenance** – "torture tested" by the most demanding framing businesses in Australia, and around the world.
- ✓ **affordable blades** – compared to other CMC's on this field, Gunnar blades are highly affordable, long lasting, and have been proven to offer higher "cost per mat" yield, compared to our competition.
- ✓ **maximum table size** – at 1900 x 1250mm work surface, you can work with any over-sized mat or two sheets of untrimmed matboard "side by side" for production.
- ✓ **#1 best selling brand of CMC in Australia** - since 1994, Gunnar continues to be the most popular brand of CMC used by more Australian framers than any other brand.



double your production!



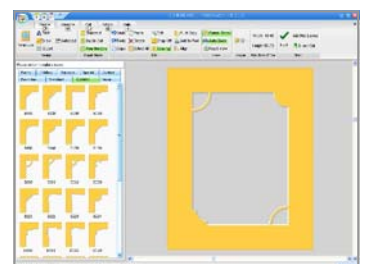
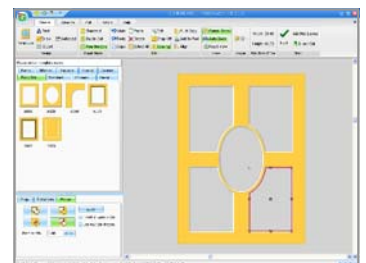
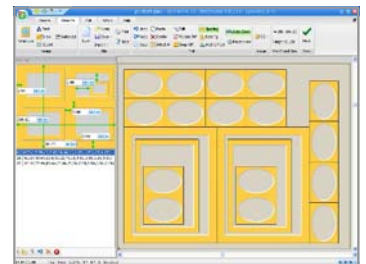
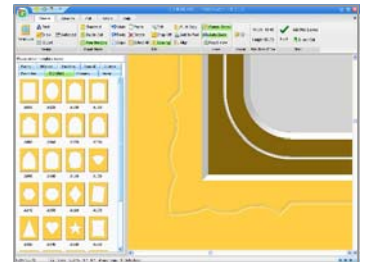
- ✓ **split clamping zones** – the Gunnar 4001 allows you to double your production with an industry unique "left-right" split clamping operation. with two separate cutting zones, a single operator can offer an output unmatched by any other brand of CMC on the planet.

professional service & support

Megawood offers the most experienced, qualified Gunnar technicians in the industry. Our technicians have been "factory trained" across our full range of machinery (including Gunnar in Switzerland), we have built our reputation for support from our collective years of experience. Megawood is familiar with the needs & demands of your equipment, and all service work is supported by our service guarantee.

GMC software features & benefits

- ✓ **easy to learn** – Gunnar GMC (Gunnar Mat Creator) software has been intuitively & logically designed by framers to "think like a framer", so you can learn with ease, featuring the industry's largest dynamic 3D view screen, with infinite dynamic mouse wheel zoom for easy visualisation.
- ✓ **customised interface** – personalise your GMC software interface to suit you! streamline your operation by categorising your mat templates into favourites, mix & match corner templates for different shapes, create your own instant-click clip-art, and even choose your own interface themes and skins!
- ✓ **direct draw mode** – quickly and accurately modify or create ANY desired shape directly on the screen just with the mouse! Paste a photo in the background and quickly trace around it using a complete range of drawing tools, without the need to import from other external software packages! The possibilities are endless.... and now within reach!
- ✓ **automatic alignment tools** – no more mud maps and calculators! GMC features the industry's most comprehensive range of alignment tools to make even the most elaborate multi-opening mat designs a breeze, including automatic snap alignment with click and drag; dynamic outside sizing; dynamic scaling; dynamic rotation and more!
- ✓ **v-grooves, reverse bevels, debossing** – can all be cut with perfect precision at the click of a mouse, with limitless layering of these on any mat layer.
- ✓ **powerful merge functions** – over-lap and combine different shapes to make new ones, as well as intersecting shapes, and automatic contour path creation between shapes as well.
- ✓ **automatic layout systems** – production jobs become simple and profitable, as the GMC software can instantly arrange and layout multiple production mats, and nested mat layouts at the click of a button; saving hours of time and maximising board yield!
- ✓ **free future software upgrades** – GMC updates are available for direct download from the Gunnar customer website, 24 hours a day.

+ GUNNAR
mat creator

affordable

- ✓ **leasing finance** – simple & flexible finance packages are available, with affordable monthly repayments. This means that your new Gunnar matcutter will not only start paying for itself from day one, but actually generate a new profitable income as well.

MEGAWOODe-mail: sales@megawood.com.auphone: **1800 677 854****www.megawood.com.au**